

HOTEL CASA ADELE

<https://www.hotelcasadele.com/en/index.html>

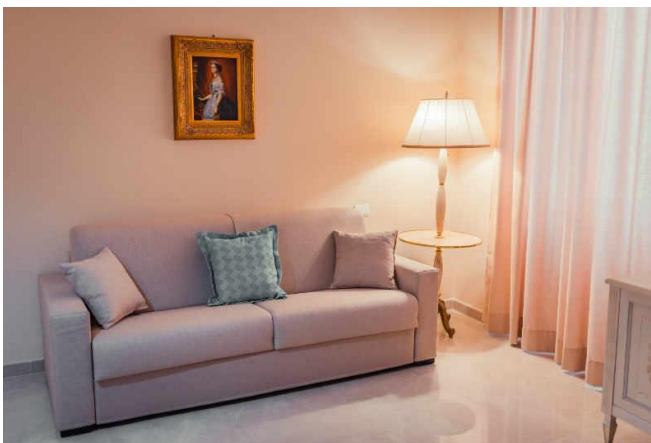
This Hotel is located in the heart of Taormina, just 50 metres from Porta Catania - one of the two historic entrances that lead onto Corso Umberto, the main pedestrian street of the historic centre. This ancient family home was transformed into a guesthouse in 1949. An appealing mix that combines the familiarity of a domestic environment but is also equipped with all the comforts of a typical first-class accommodation.

Casa Adele, is one of the very few hotels in the historical centre of Taormina, which has access by car and private parking (Parking indoor situated at the bottom floor of hotel at 15€/day, by reservation and availability)

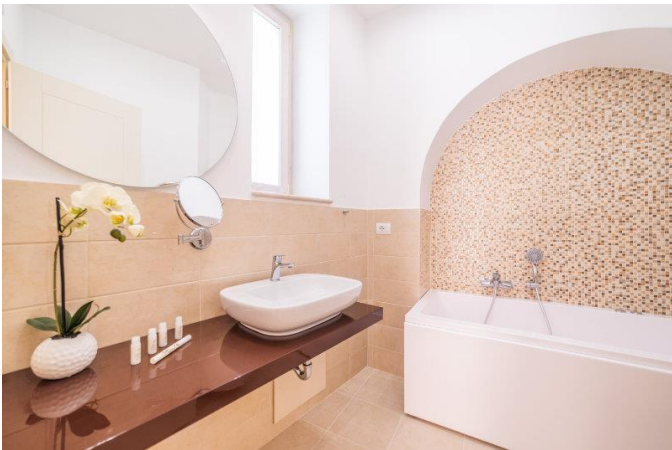
ACCOMODATION & RATES for DOUBLE OR SINGLE OCCUPANCY:

TYPE OF ROOM	CURRENCY	PRICE/NIGHT	
CLASSIC BB	EURO	170	
CLASSIC WITH TERRACE BB	EURO	190	
SUPERIOR BB	EURO	190	
JUNIOR SUITE WITH TERRACE BB	EURO	250	

Classic



Classic with terrace

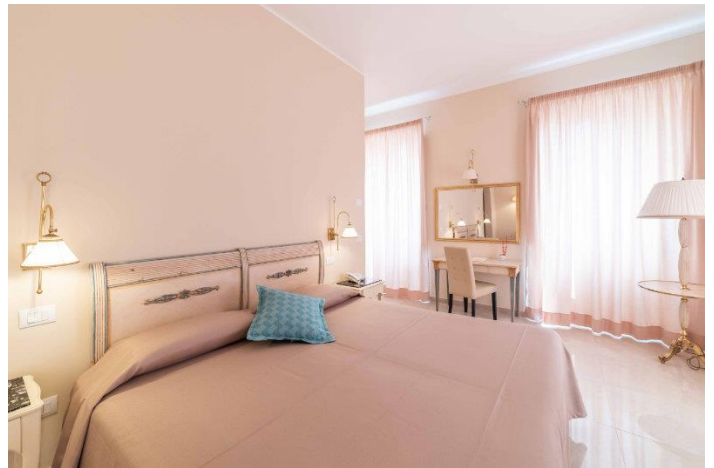


Superior room





Junior Suite



Tourist Tax is not included in the rate, euro 2,00 per person per day not applicable to children under 12. Please consider that is possible to add an extra bed in Classic type rooms with extra charge.